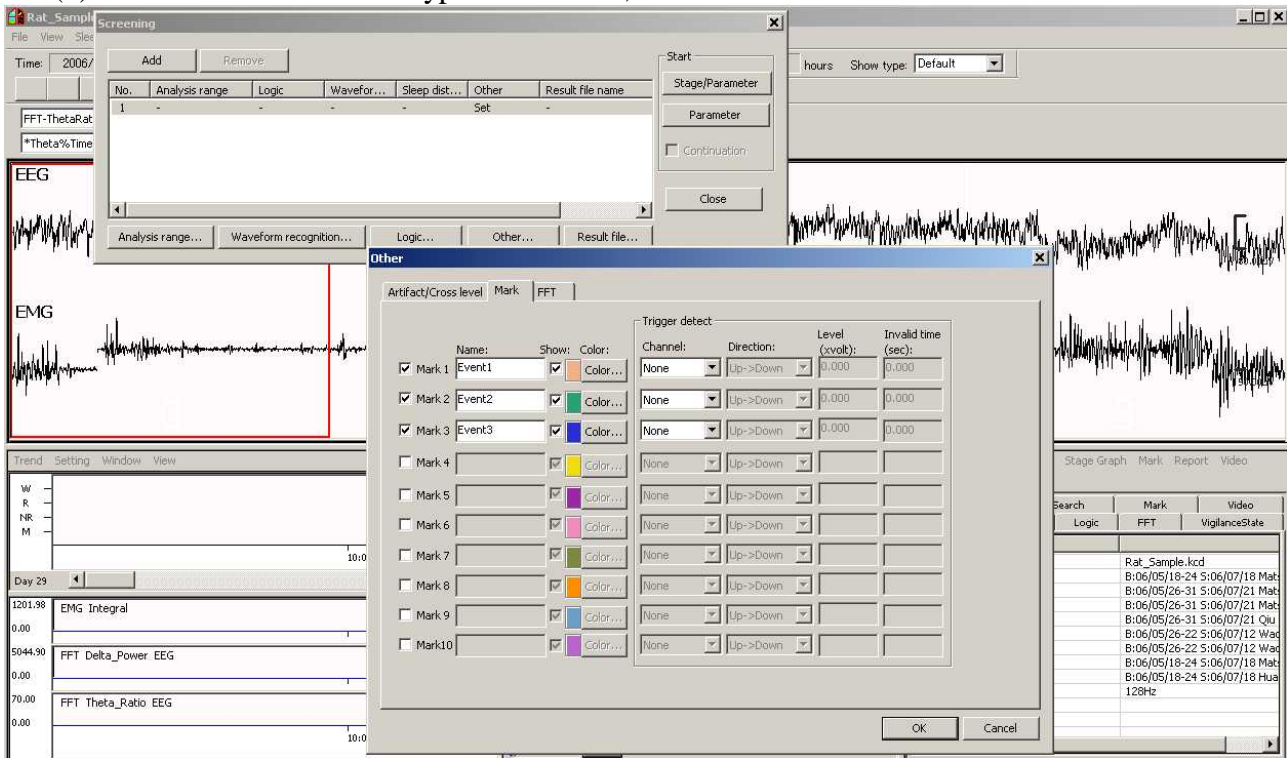
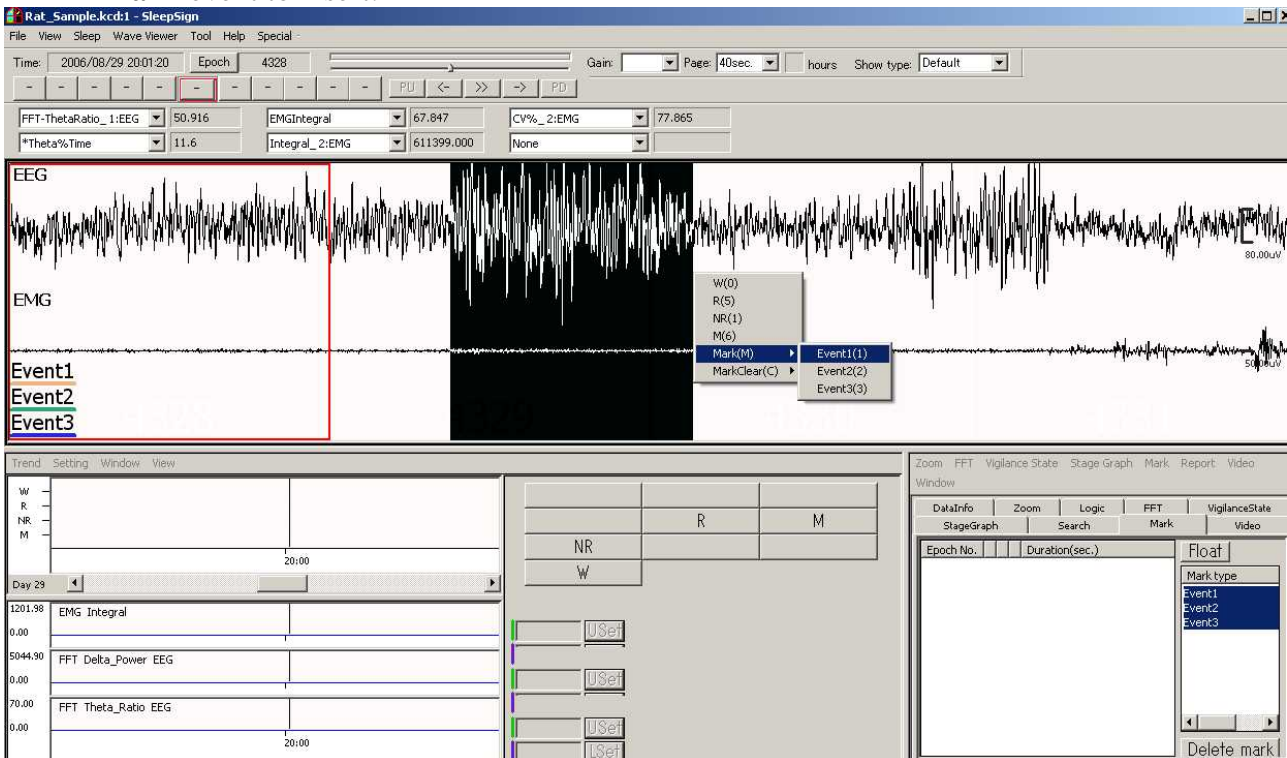


How to insert and export event markers

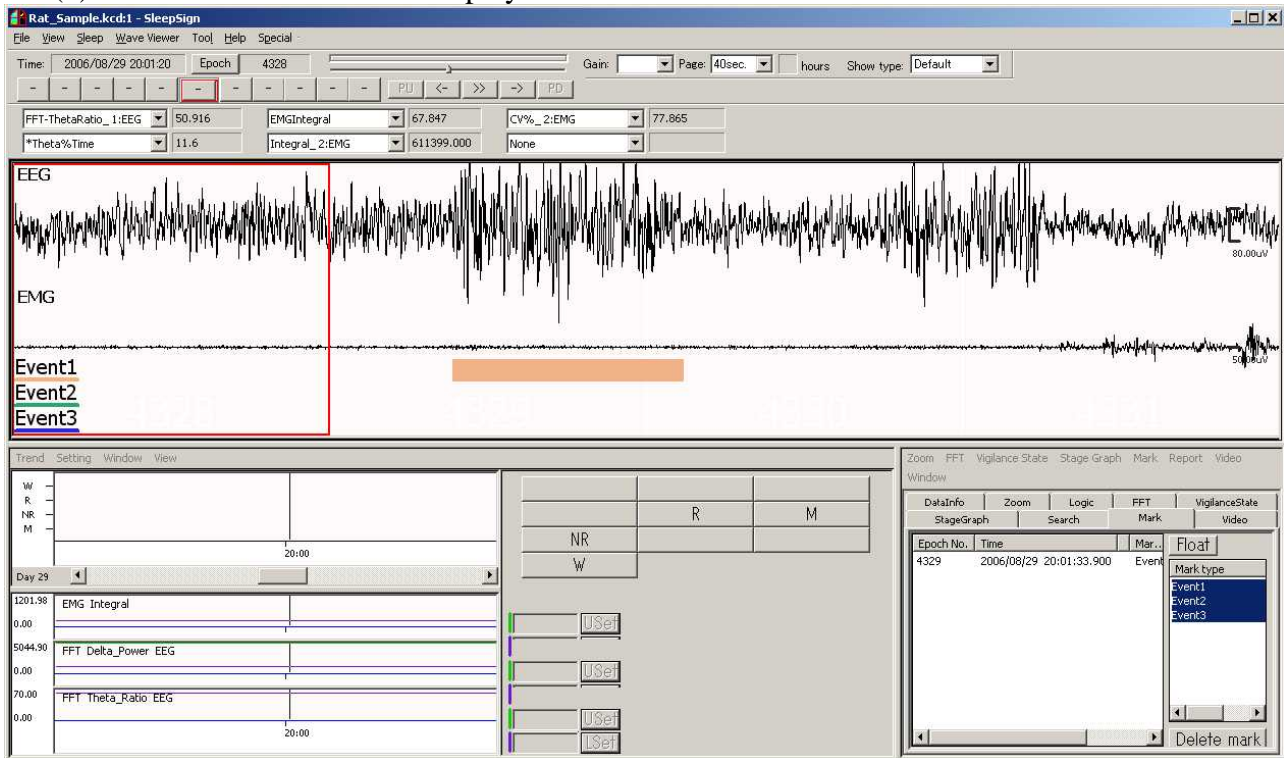
- (1) Select **Sleep-Screening-Other-Mark**
- (2) Check marks to use and type event name, and click **OK**.



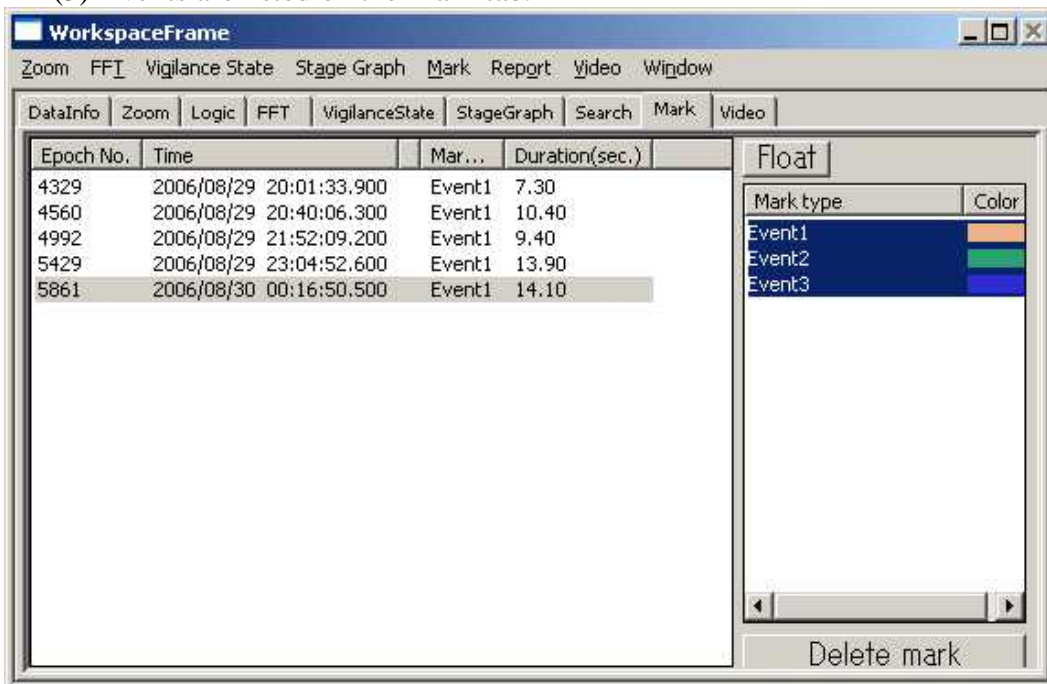
- (3) Drag on the waveform where you want to insert an event. From the popup menu, select **Mark-event** to insert.



(4) The event is inserted and displayed as a horizontal bar.



(5) Events are listed on the Mark tab.



(6) You can export the event list from **Mark-Text output-List** menu.

(7) You can export the report of the events (Frequency, total duration, mean duration, etc) from **Mark-Text output-Sum up** menu.