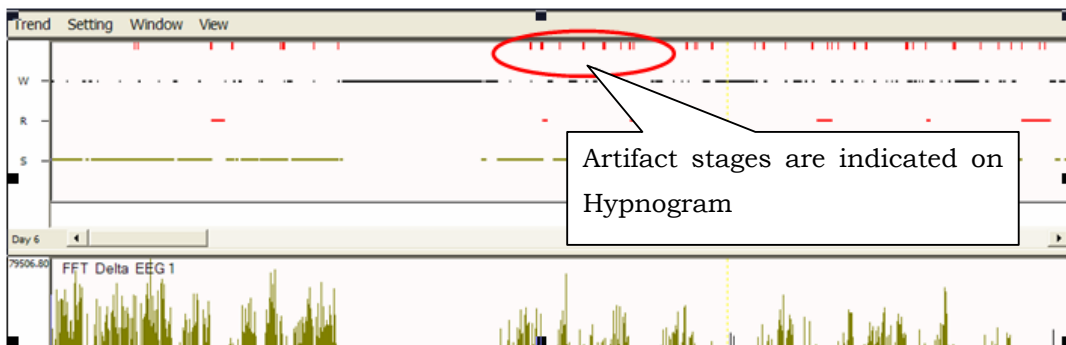
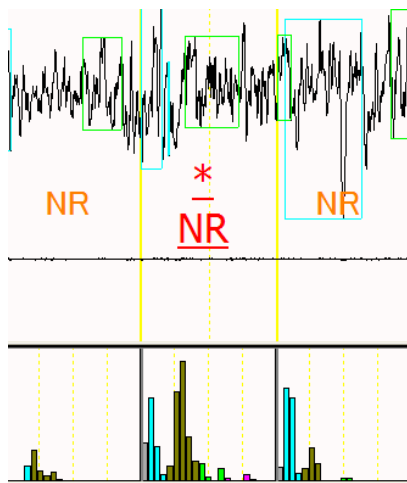


How can I detect artifacts?

You can detect epochs that contain artifacts. These epochs detected as containing artifacts are excluded from the calculation of average FFT, which represents sleep quality, while being counted for the Stage Graph and the Vigilance State Parameters, which represent sleep quantity. An asterisk is displayed above the stage name if artifacts are detected in the epoch. Artifact stages are also indicated on Hypnogram



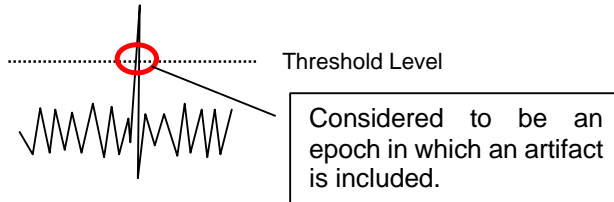
You can detect artifacts manually or automatically

1) Manual detection

Select a stage while holding the Ctrl key.

2) Automatic detection

SleepSign automatically detects epochs which contain artifacts if there is a spike absolute value of whose amplitude exceeds the specified threshold in that epoch.



To detect artifacts automatically, set up the threshold of amplitude for EEG and EMG before you run the auto-scoring.

- ① Select “Sleep” –“Screening”
- ② In the “Screening” dialog, select “Other”
- ③ In the next dialog, select “Artifact/CrossCount” tab
- ④ Select a channel to setup the threshold of amplitude
- ⑤ Check “Check”
- ⑥ Specify the threshold
- ⑦ Click “Apply” button

To set up the threshold of amplitude for other channels, repeat step ④-⑦.

- ⑧ Click “OK”

